

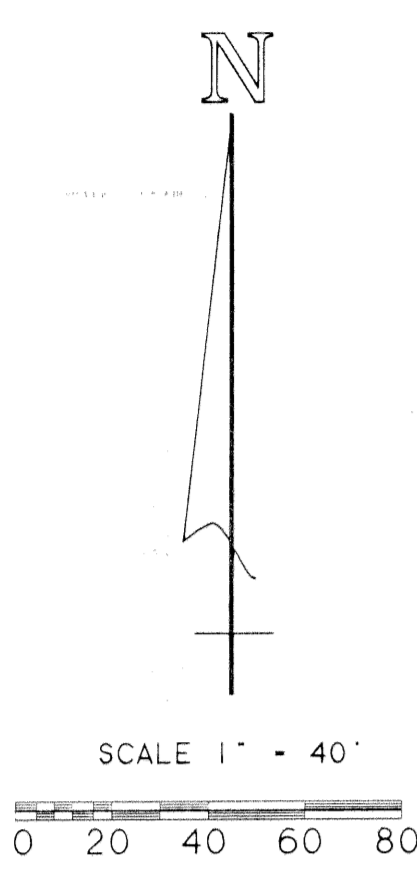
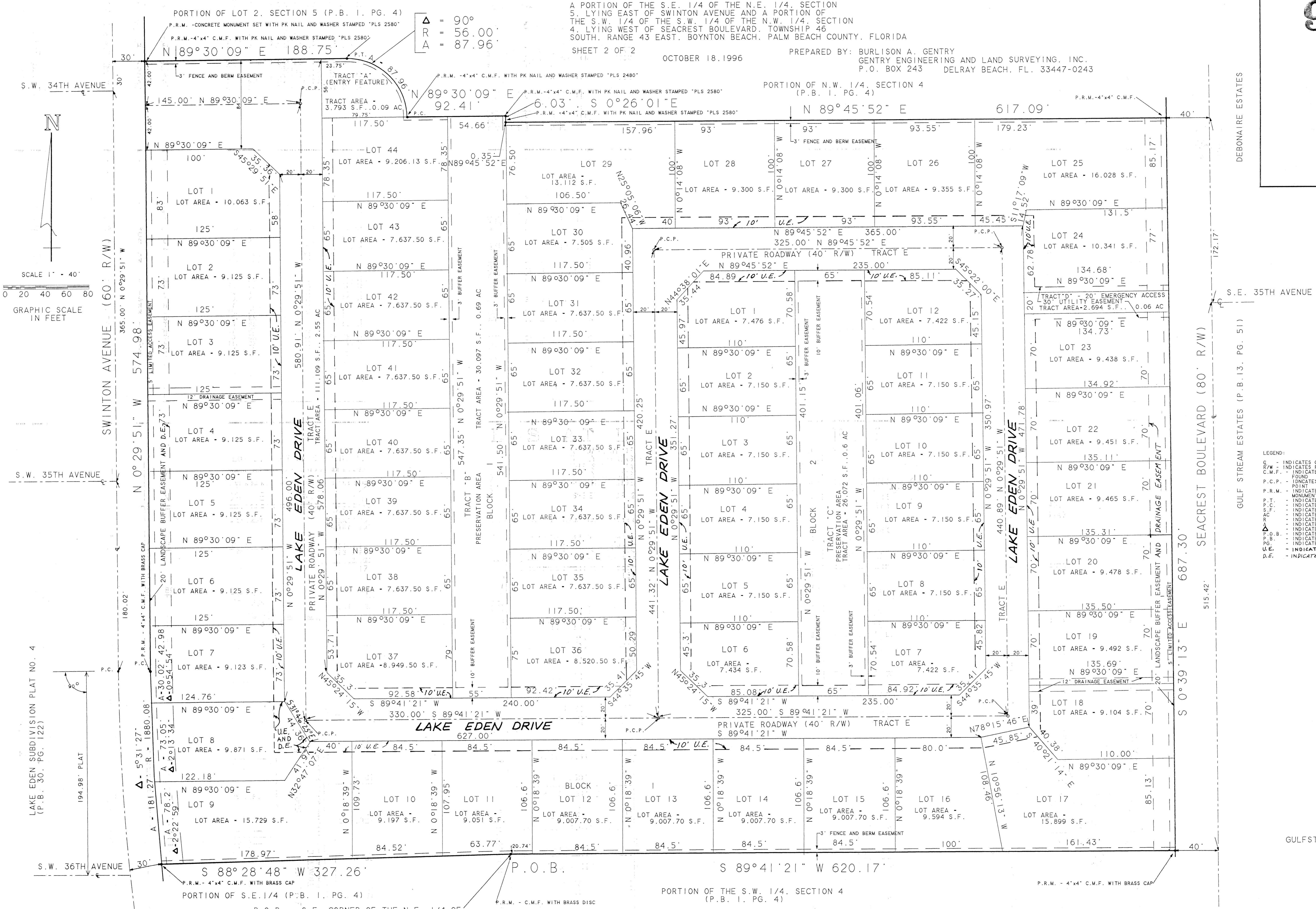
HILLS AT LAKE EDEN, P.U.D.

A PORTION OF THE S.E. 1/4 OF THE N.E. 1/4, SECTION 5, LYING EAST OF SWINTON AVENUE AND A PORTION OF THE S.W. 1/4 OF THE S.W. 1/4 OF THE N.W. 1/4, SECTION 4, LYING WEST OF SEACREST BOULEVARD, TOWNSHIP 46 SOUTH, RANGE 43 EAST, BOYNTON BEACH, PALM BEACH COUNTY, FLORIDA

SHEET 2 OF 2

OCTOBER 18, 1996

PREPARED BY: BURLISON A. GENTRY
GENTRY ENGINEERING AND LAND SURVEYING, INC.
P.O. BOX 243 DELRAY BEACH, FL. 33447-0243



- LEGEND:
- C - INDICATES CENTER LINE
 - R/W - INDICATES RIGHT-OF-WAY
 - C.M.F. - INDICATES CONCRETE MONUMENT FOUND
 - P.C.P. - INDICATES PERMANENT CONTROL POINT
 - P.R.M. - INDICATES PERMANENT REFERENCE MONUMENT
 - P.T. - INDICATES POINT OF TANGENT
 - P.C. - INDICATES POINT OF CURVE
 - S. - INDICATES SQUARE FEET
 - R - INDICATES RADIUS
 - Δ - INDICATES ARC DISTANCE
 - P.O.B. - INDICATES POINT OF BEGINNING
 - P.B. - INDICATES PLAT BOOK
 - PAGE - INDICATES PAGE
 - U.E. - INDICATES UTILITY EASEMENT
 - D.E. - INDICATES DRAINAGE EASEMENT

SUBDIVISION HILLS AT LAKE EDEN
BOOK 79 PAGE 90
FLOOD ZONE - FLOOD MAP
ZONING
SE - ZIP CODE
PUD NAME City of Boynton Beach

P.O.B. - S.E. CORNER OF THE N.E. 1/4 OF SECTION 5 AND THE S.W. CORNER OF THE N.W. 1/4 OF SECTION 4, TOWNSHIP 46 S., RANGE 43 E., PALM BEACH COUNTY, FLORIDA

PORTION OF THE S.W. 1/4, SECTION 4 (P.B. 1, PG. 4)

PORTION OF S.E. 1/4 (P.B. 1, PG. 4)